

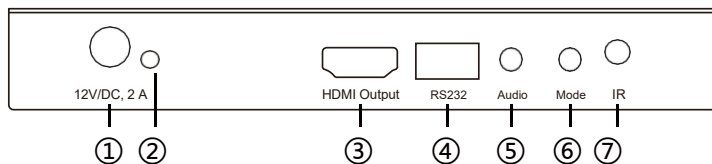
HDMI 4X1 QUAD MULTI-VIEWER WITH SEAMLESS SWITCHER

Quick Installation Guide Ver. 1.0

All brand names and trademarks are properties of their respective owners

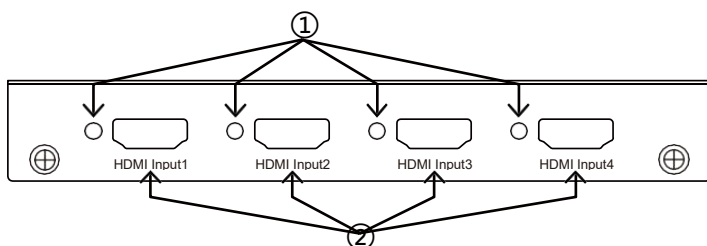
PRODUCT OVERVIEW:

Front Panel:



- 1: 12V/DC: Plug the 12V DC power supply into the unit and connect the adaptor to AC wall outlet.
- 2: POWER LED: This blue LED illuminates when the device is connected with power supply.
- 3: HDMI OUTPUT: The HDMI is where you connect the HDTV or monitor with HDMI cable for input source display.
- 4: RS232: Connect the RS232 port to the PC or notebook by RS232 Cable.
- 5: Audio BUTTON: Press this button to select the audio from the input sources.
- 6: MODE BUTTON: Press this button to select the multi-view display mode.
- 7: IR :Remote control receiver window.

Back Panel:



- 1: IN1,2,3,4 LED: These blue LED illuminates when the device is connected with the sources.
- 2: HDMI Input1,2,3,4: These HDMI Inputs are where you connect the HDMI source output from DVD, PS3, Set-top Box and Note Book.

INTRODUCTION:

This HDMI 4X1 Switch is a high performance 4 by 1 Quad Multi-Viewer with seamless switcher. It supports four HDMI input sources to be displayed on one screen with five multiview mode. As a switcher, it can also seamlessly switch the four HDMI input freely. The product can be controlled by various ways, through the front panel button, IR, RS232 control etc.

FEATURES:

- Compliant with HDMI 1.3a, HDCP 1.2
- Supports multiplexed HDMI 4-input and 1-output
- Supports up to 1080p60 High Definition resolution
- Support 4 by 1 Quad Multi-viewer and seamless switch(with same resolution)
- Support button, IR control, RS232 control
- Support scaler up, scaler down function
- Support multi output resolution

APPLICATION:

- Video Switcher
- Surveillance for multi camera
- Car quad monitor
- Video format converter
- Multimedia panel

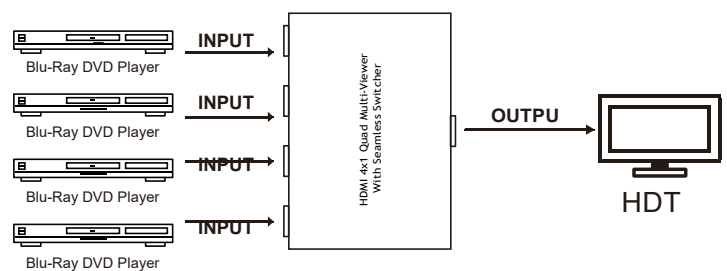
PACKAGE CONTENTS:

- 1× Main unit
- 1× 12V/DC, 2A Power Supply
- 1× User Manual
- 1× Remote control

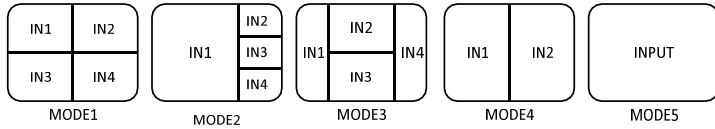
CONNECTION AND OPERATION:

1. Connect the signal sources such as Blu-Ray Player, Play Station 3, audio/video receiver, satellite receivers and computers equipped with HDMI output interfaces with a short high-speed HDMI cable to the HDMI Switcher inputs.
2. Connect the HDMI output of the HDMI Switcher to a high-definition display device such as HD-LCD, HD-DLP and HD projectors with HDMI input interfaces with a HDMI cable to HDMI Switcher output.
3. The Switcher is powered by an external power supply which is included. Connect power first to the source, then to the Switcher and then to HD TV or projector.
4. The input source can be controlled from the display. The switcher have a capability of being controlled via Front push button, Remote control or RS232 Control.

CONNECTION DIAGRAM:



DETAIL DESCRIPTION OF DISPLAY MODE:



The product provides 5 multi-viewer display modes as below Mode1 ~ 5.

MODE1: The four HDMI input sources are displayed in 2x2 on one screen.

MODE2: The four HDMI input sources are displayed with one bigger and three smaller windows on one screen.

MODE3: The four HDMI input sources are displayed H-split on one screen.

MODE4: The two HDMI input sources are displayed in 2x1 on one screen.

MODE5: This is the full screen mode, press IN1 ~ IN4 button will select the corresponding channel and displayed in full screen as a seamless switcher.

REMOTE CONTROL:



ON/OFF: Power on/off switch.

Mode select button (M1-M5, H, 1/2, 3/4, Ch1-Ch4, $\frac{1}{2}$): Press these buttons, the quad multi-viewer will select the corresponding mode, see the detail description of display mode.

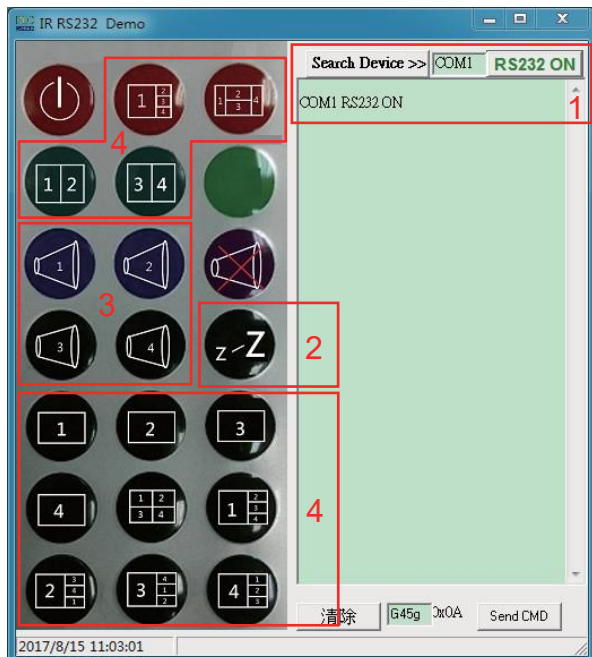
Blank button: None function.

Audio Select button (\uparrow 1- \downarrow 4): Press these buttons to select the audio from the input sources

Mute button: Turn off Sound

H/S Resolution button: upscale 720P signal into 1080P or downscale 1080P signal into 720P.

1. Select PC connect COM port to make sure your PC's COM port is the same as the software's COM port (default COM6). If not, please revise the COM port in the software. Then double click to connect or disconnect PC and multi-viewer.
2. Select the HDMI output resolution.
3. Select the audio from the input sources
4. Select the output mode, see the detail description of display mode.



5

PC CONTROLLER USER GUIDE:

Installation

The PC controller is green software. Just use a cable to connect the PC via RS232 port and copy "CQ4120 Quad multi-viewer.exe" to PC to complete installation.

Preparation

1. Connect PC and multi-viewer by RS232 cable (headers of both sides of cable should be FEMALE)
2. Power-up multi-viewer
3. Double click CQ4120 Quad multi-viewer.exe icon to run it, then see the following picture.

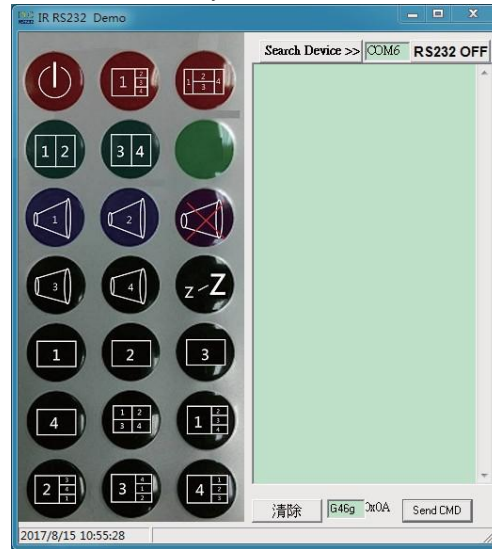
RS-232:

TX \neq RX



RS232

The unit provides a path to pass through the RS232 signal, connect to your RS232 devices, such as PC, IP Camera, Creston control panel, Smart Matrix, printer and Scanner and so on. It works when TX, RX and your RS232 devices baud rate is the same.



6

SPECIFICATIONS:

Signal Inputs/Output	
Maximum Single Link Range	1920x1080@60
HDMI Input/Output Connector	Type A 19 pin
Operating Frequency	
Vertical Frequency Range	50/60Hz
Video Amplifier Bandwidth	2.25Gbps
Resolutions	
Input Resolution	480i60Hz, 480p60Hz, 576i50Hz, 576p50Hz, 720p50/60Hz, 1080i50/60Hz, 1080p24/25/30/50/60Hz
Output Resolution	720p, 1080p
Mechanical Data	
Dimensions	148.5mm(W) X 103mm (D) X 21.5mm(H)
Weight	342g
Chassis Material	Metal
Color	Black
Warranty	
Limited Warranty	1 Year Parts and Labor
Environmental	
Operating Temperature	0 °C to +70°C
Operating Humidity	10% to 85 % RH (no condensation)
Storage Temperature	-10°C to +80°C
Storage Humidity	5% to 90 % RH (no condensation)
Power Requirement	
External Power Supply	12V DC@2A
Power Consumption(max)	10 W
Regulatory Approvals	
Main Unit	FCC, CE
Power Supply	UL, CE, FC C, REACH, ROHS

7

8