

Wall Plate 4K HDBaseT Video Extender with programmable controller

Model:HC

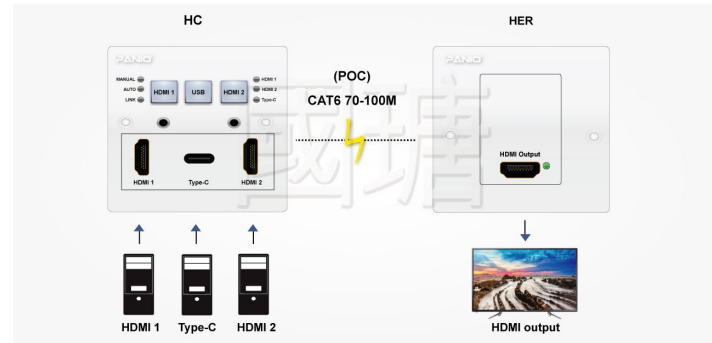
Features

- Transmits HDMI/ Type-C+IR signals using HDBaseT technology.
- HC-A: Up to 100 meters at resolution 1080P 60Hz, up to 70 meters at resolution 4K 30Hz .
- HC-B: Up to 70 meters at resolution 1080P 60Hz, up to 35 meters at resolution 4K 30Hz.
- The panel is beautifully designed, and all the connecting wires are hidden behind the panel.
- Built-in programmable controller, capable of storing 10 sets of RS-232 commands.
- Built-in automatic EQ adjustment for optimal signal clarity.
- Auto-detection function allows the system to automatically select the latest video source.
- Support bidirectional IR transmission.
- Comply with HDMI1.4b, HDCP standard.
- Optional TV receivers can play and display at a distance.
- Support POC unilateral power supply function.
- It can be directly connected to the GMS series matrix switcher, no need to purchase an additional receiver.

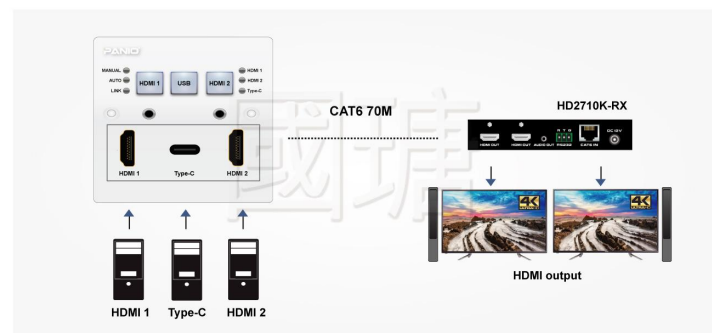
Specification

Input	2 x HDMI, 1 x Type-C, 2 x IR
Output	1 x RJ-45 port (HDBaseT)
Video resolution	4K 30Hz/ 1080P
Transmission distance	HV-A: Up to 100 meters at resolution 1080P 60Hz up to 70 meters at resolution 4K 30Hz. HV-B: Up to 70 meters at resolution 1080P 60Hz up to 35 meters at resolution 4K 30Hz.
Protocol standard	Support HDMI1.4b, HDCP1.4
Signal transmission rate	10.2Gbps
Cable length	Input and output can be connected with a maximum length of 5 meters HDMI cable
Power supply	DC12V 1.5A
Dimensions	86 x 86 x 38mm (LxWxH)
Item Weight	245g

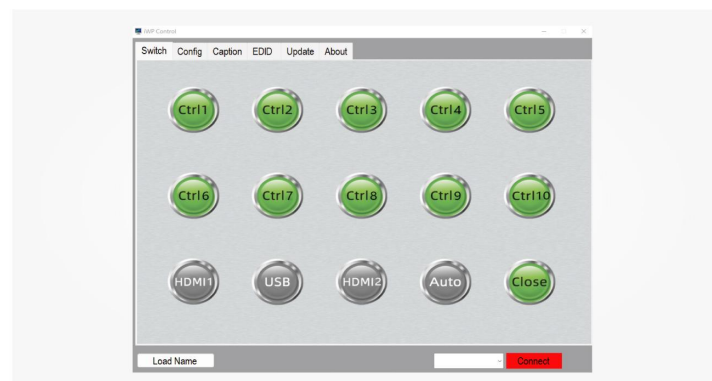
Diagram



with Extender



Built-in programmable controller, capable of storing 10 sets of RS-232 commands.



Package contents

- 1 X HC transmitter
- 1 X 12V 1.5A adapter
- 1 X User manual