

## Irregular video wall controller

Model:HW5210

### Features

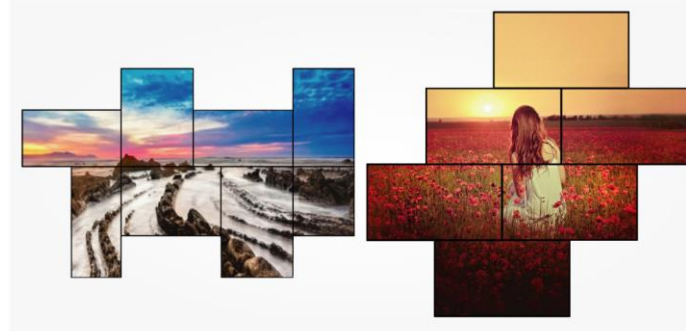
- Supports mashup signal USB/VGA/Composite/HDMI switching input, and synchronous output to up to 10 HDMI displays.
- Support USB 2.0 interface, can be connected to USB flash drive, embedded audio; support video, picture, MP3, TXT.
- Support MIRROR function (Images rotate 180 degrees).
- Support Image capture function.
- Support 2-10 ports HDMI output with customized.
- Support 3.5mm audio output.
- The resolution is up to 1080P 60Hz
- Support button / remote control / RS-232 control.
- Support 19 inches 1U rack.

### Specification

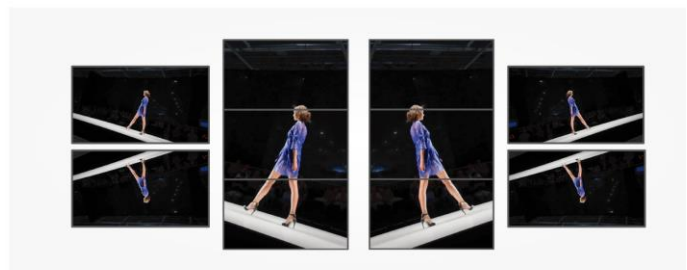
<b>MODLE NAME</b>	<b>HW5210</b>
Input	1 x HDMI, 1 x USB, 1 x VGA + 1 x 3.5mm, 1 x AV
Output	2-10 ports x HDMI ( Type A Female ) , 1 x 3.5mmoutput with customized
Video Resolution	DTV/HDTV: 1080P@60HZ、 720P@60HZ、1024x768@60HZ
Video wall mode	2x2、2X3、2X4、2X5、3X2、3X3 、1X..... video wall
Splitter mode	1 input signal synchronization distribution multiple HDMI displays
Control mode	Panel button / Remote control / RS-232
Material	Metal
Power Supply	AC 90V-260V 50/60HZ
Dimension	L442 X W242 X H45 mm

### Diagram

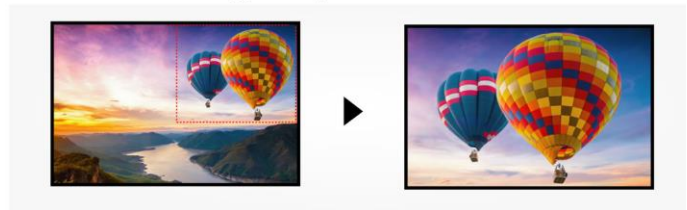
#### Multi-angle deformation stitching function



#### MIRROR function (Images rotate off 180 degrees)



#### Image capture function



### Package connects

- 1 x IR (Without battery)
- 1 x Power Cord
- 1 x User Manual